



ARM Group Inc.

Earth Resource Engineers and Consultants

July 14, 2004

Mr. Kurt W. Carr, Chief
Pennsylvania Historical and Museum Commission
Bureau for Historic Preservation
400 North Street
Commonwealth Keystone Building, 2nd Floor
Harrisburg, PA 17120-0093

Re: Proposed Tewar Landfill, Rush Township,
Centre County, Pennsylvania
ARM Project 04117

Dear Mr. Carr:

The purpose of this correspondence is to request input from the Pennsylvania Historical and Museum Commission regarding certain Pennsylvania Department of Environmental Protection (PADEP) application questions pertaining to a proposed new landfill facility. Attached are United States Geologic Survey (USGS) 7.5-minute topographic quadrangle maps displaying the location of the proposed facility.

ARM Group Inc. (ARM) requests your input regarding the PADEP, Bureau of Land Recycling and Waste Management, Form – D, Environmental Assessment Process for Municipal Waste Management Facilities, Section H, Questions 1 and 2 as they pertain to the above referenced facility. Specifically, Questions 1 and 2 ask:

- Is the project within one mile of a historic property owned by the Pennsylvania Historical and Museum Commission?
- Is the project located within ¼ mile of a historic site listed in the National Register of Historic Places or the Pennsylvania Inventory of Historic Places or an archaeological site listed in the Pennsylvania Archaeological Site Survey?

Based on a review of data available to ARM, it is our understanding that the proposed new landfill is not located within any of the areas of potential concerns as identified in the questions above.

To address the PADEP, please review the above questions and provide Pennsylvania Historical and Museum Commission responses as they pertain to this project. ARM greatly appreciates

July 14, 2004

your assistance with this inquiry. Please contact the undersigned at (717) 533-8600 should you have any questions or require additional information. Thank you very much.

Sincerely,

ARM Group Inc.

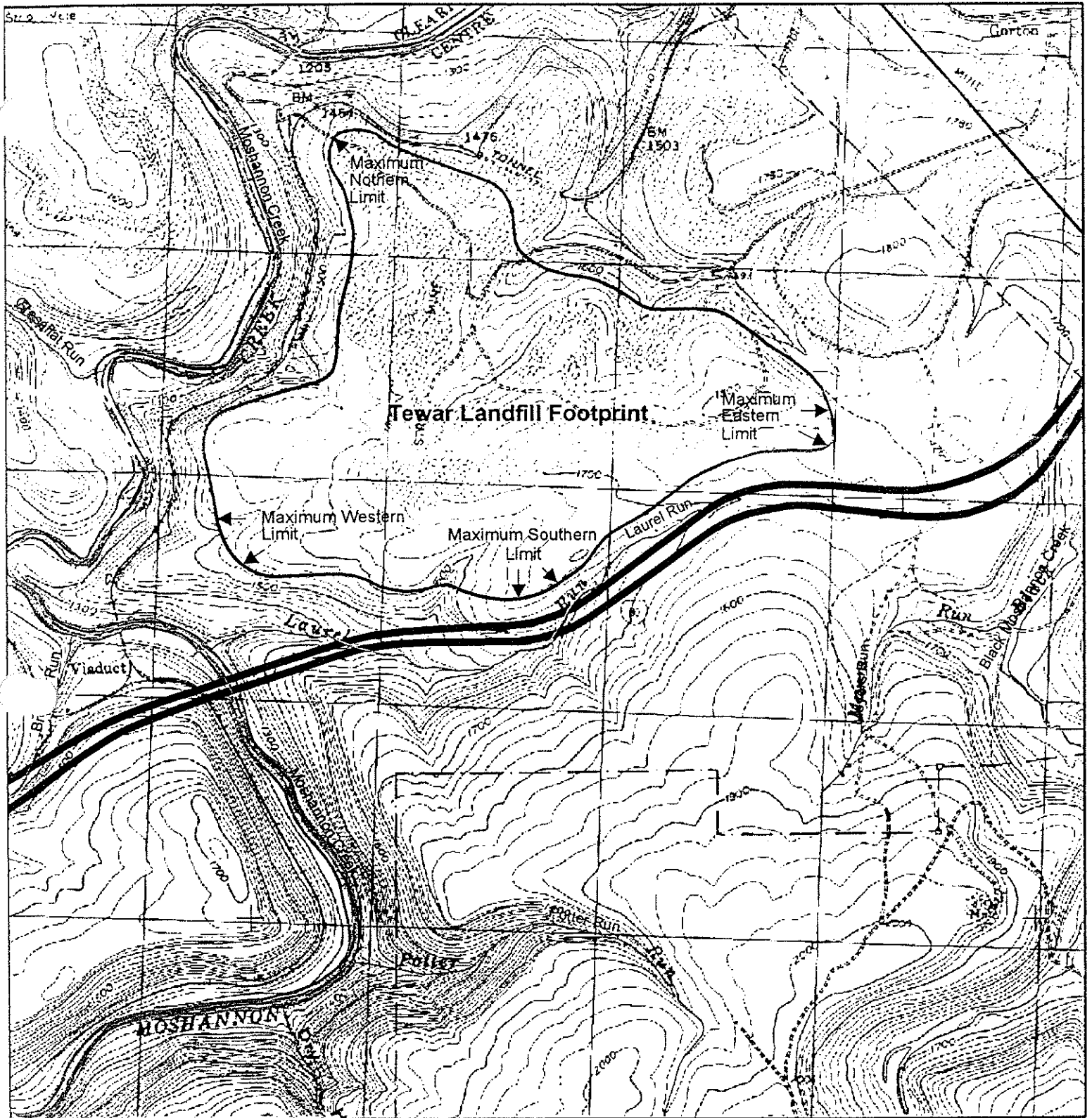


Kanishka Perera Ph.D.
Staff Engineer

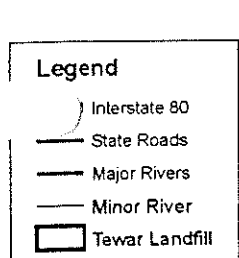
Attachments: Figure 1A – Proposed Footprint-Tewar Landfill (Scale 1" = 2000')
Figure 1B – Proposed Footprint-Tewar Landfill (Scale 1" = 4000')

cc: William S. Tafuto P.E. (ARM)

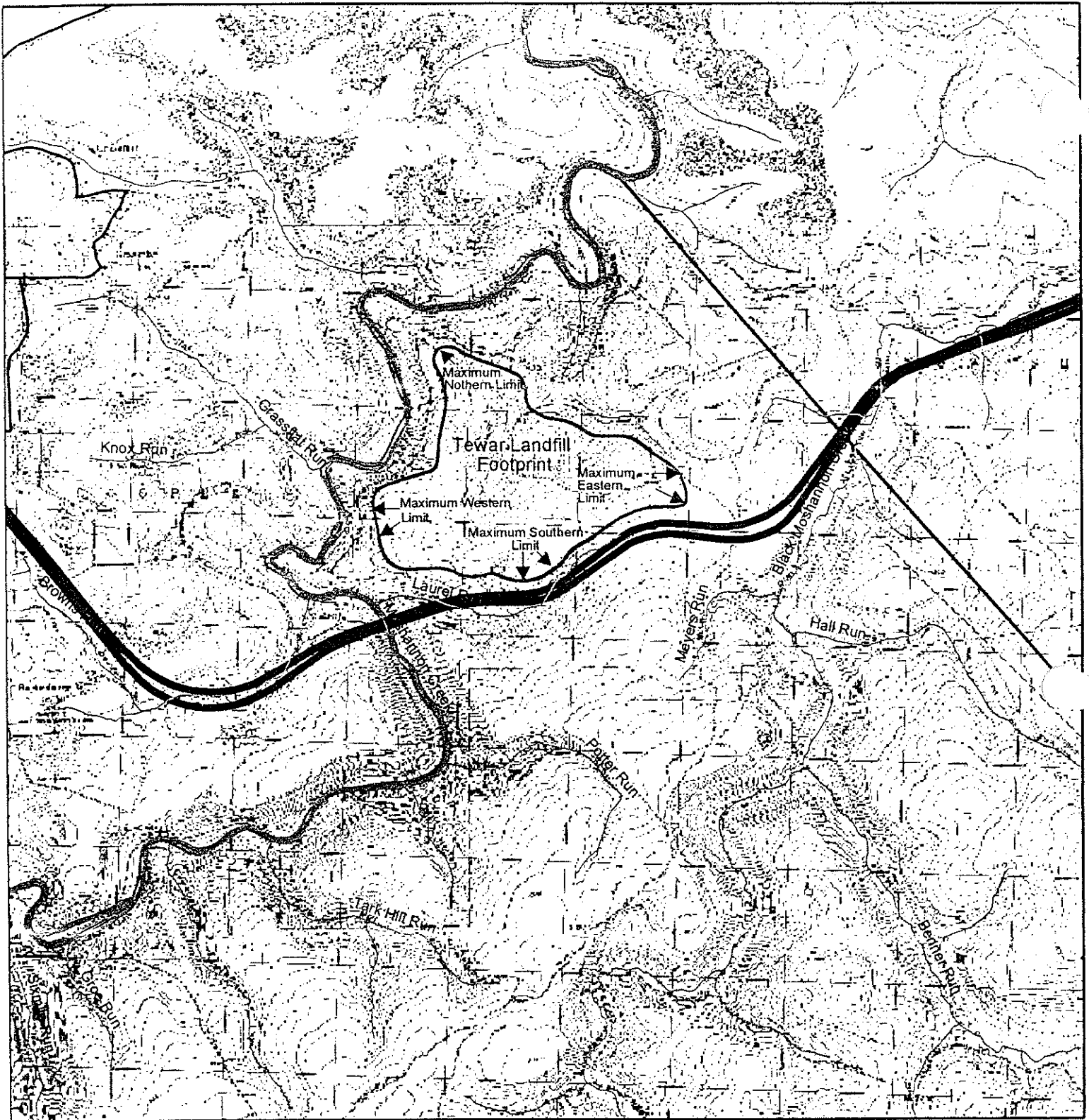




Base map for Black Moshannon USGS 7.5 minute quadrangle dated 1994.
 Limit shown is the maximum extent of landfill. Approximately 50% of area encompassed by the outline will be used for landfilling activities (approximately 350 acres +/-).








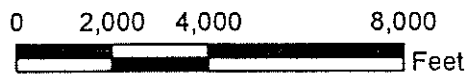
Proposed Footprint - Tewar Landfill		
Resource Recovery, LLC Rush Township Centre County, Pa.		
July 2004	Scale 1"=2000'	04117
	ARM Group Inc. Earth Resource Engineers and Consultants 1129 Wine Commerce Blvd • Moshannon, PA 17033-4797 0170 333-8600 fax 0170 333-6807	Figure 1A




Base map for Black Moshannon USGS 7.5 minute quadrangle dated 1994.
 Limit shown is the maximum extent of landfill. Approximately 50% of area encompassed by the outline will be used for landfilling activities (approximately 350 +/-).

Legend

-  Interstate 80
-  State Roads
-  Major Rivers
-  Minor River
-  Tewar Landfill



Proposed Footprint - Tewar Landfill		
Resource Recovery, LLC Rush Township Centre County, Pa.		
July 2004	Scale 1"=4000'	04117
 ARM Group Inc. <small>Earth Resource Engineers and Consultants 1124 West Commerce Road • Harrisburg, PA 17133-2797 (717) 533-8600 Fax: (717) 533-8629</small>		Figure 1B



Commonwealth of Pennsylvania
Pennsylvania Historical and Museum Commission
Bureau for Historic Preservation
Commonwealth Keystone Building, 2nd Floor
400 North Street
Harrisburg, PA 17120-0093

July 23, 2004

Kanishka Perera, Ph.D.
ARM Group, Inc.
1129 West Governor Road
PO Box 797
Hershey, PA 17033-0797

TO EXPEDITE REVIEW USE
BHP REFERENCE NUMBER

Re: File No. ER 2004-2464-027-A
LAND, Proposed Tewar Landfill,
Rush Twp., Centre Co.

Dear Dr. Perera:

The Bureau for Historic Preservation has reviewed the above named project under the authority of the Environmental Rights amendment, Article 1, Section 27 of the Pennsylvania Constitution and the Pennsylvania History Code, 37 Pa. Cons. Stat. Section 500 et seq. (1988). This review includes comments on the project's potential effect on both historic and archaeological resources.

Based on our survey files, which include both archaeological sites and standing structures, there are no National Register eligible or listed historic or archaeological properties in the area of this proposed project. Therefore, your responsibility for consultation on this project is complete.

Should artifacts or archaeological resources be encountered during construction, we request that you notify our office. This notification will not delay your project in any way. We simply wish to record this information before it is lost. The Bureau for Historic Preservation can be contacted at (717) 783-8946. Thank you in advance for this consideration.

Sincerely,

K. W. Carr
Kurt W. Carr, Chief
Division of Archaeology &
Protection

KWC/lmm