



SURFACE TRANSPORTATION BOARD
Washington, DC 20423

APR 17 2008

Office of Economics, Environmental Analysis and Administration

April 14, 2008

Robert Jacobs
Centre County Planning and Community Development Office
Willowbank County Office Building
420 Holmes Street
Bellefonte, PA 16823-1488

Re: Finance Docket No. 35116, RJ Corman Railroad Co., Beech Creek Branch Line –
Construction and Operation – between Wallaceton and Gorton, Pennsylvania;
Preliminary Consultation

Dear Mr. Jacobs:

I am writing to request your review and preliminary comments (explained in more detail below) on a proposed rail line construction and operation that will soon be filed with my agency, the Surface Transportation Board (Board). RJ Corman Railroad Company intends to file a petition with the Board requesting authority to construct and operate an approximate 20-mile segment of the former Beech Creek Rail Line from Wallaceton to Gorton, PA (see Figure 1, attached). The proposed rail line construction would re-activate service over the 20-mile segment and connect an active RJ Corman line in Wallaceton with a proposed industrial development including a landfill, biofuels plant, and a quarry located near Gorton in Rush Township, Centre County.

Should this rail line construction and operation proposal be approved by the Board, RJ Corman would be able to provide rail transportation service to and from the proposed industrial development and landfill, biofuels plant, and quarry. RJ Corman Railroad Company anticipates that the line would handle approximately 17,000 carloads annually, or one round trip per day at approximately 55 carloads per trip, six days per week.

Pursuant to the National Environmental Policy Act (NEPA) and the Board's environmental rules, the Board's Section of Environmental Analysis (SEA) will prepare an environmental document that evaluates the potential environmental effects of the proposed project. **The purpose of this letter is to request information regarding potential resources within the project area that may be of concern to your agency, as well as any permits and approvals that may be required.**

This letter begins the process by which SEA will assess the potential environmental effects, both positive and negative, that may be associated with the proposed rail line re-activation. We appreciate your assistance in identifying whether any resources of concern to your agency may be affected by the proposed project and welcome information on any additional issues or concerns that you consider appropriate. We request your response by May 16, 2008, so that we may be able to schedule any meetings, site visits, or surveys, conduct necessary follow-up activities, and incorporate your response into the scope of the study, as appropriate.

Skelly and Loy, Inc. is serving as SEA's independent third-party consultant in this proceeding and will assist SEA in the preparation of the environmental document. Please send your comments to:

Ms. Sandy Basehore
Skelly and Loy, Inc.
2601 North Front Street
Harrisburg, PA 17110

The environmental document will be either an environmental assessment (EA) or an environmental impact statement (EIS). SEA's decision on whether to prepare an EA or an EIS will be based in part on comments received in response to this agency consultation letter. SEA will make the environmental document available for review by agencies and the public as required by NEPA and the Board's environmental rules (49 CFR 1105). In reaching its decision, the Board will take into account the environmental document and all environmental comments that are received.

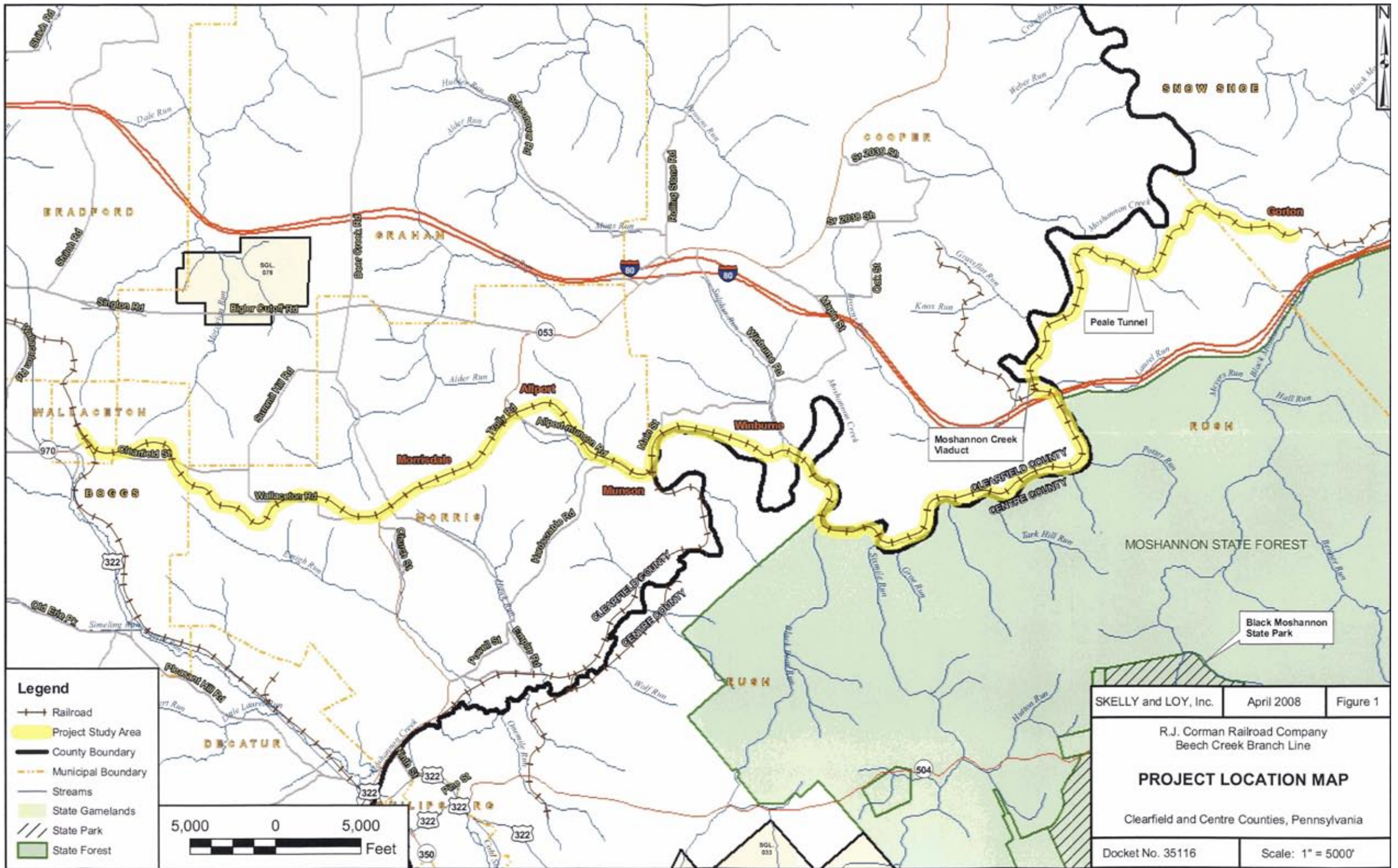
If you have any questions, please do not hesitate to contact Sandy Basehore, Project Manager for Skelly and Loy, Inc., at 717-232-0593, or Danielle Gosselin, SEA Project Manager, at 202-245-0300. Thank you for your assistance.

Sincerely,



Victoria Rutson
Chief
Section of Environmental Analysis

cc: Ronald A. Lane, Esq.



- Legend**
- +— Railroad
 - Project Study Area
 - County Boundary
 - Municipal Boundary
 - Streams
 - State Gamelands
 - State Park
 - State Forest



SKELLY and LOY, Inc.	April 2008	Figure 1
R.J. Corman Railroad Company Beech Creek Branch Line		
PROJECT LOCATION MAP		
Clearfield and Centre Counties, Pennsylvania		
Docket No. 35116	Scale: 1" = 5000'	